

1G-0422-T	PRELIMINARY TEST GENERAL STUDIES & MENTAL ABILITY (English & Telugu)	Question Booklet Number
PAPER CODE 22040		342457 ✓

Duration : 150 Minutes

Max. Marks : 150

అభ్యర్థులకు సూచనలు

- ప్రశ్నా పత్రాన్ని తెరిచిన వెంటనే అందులోని 150 ప్రశ్నలు వాటికిచ్చిన ఆస్పన్న అన్నీ సరిగ్గా ముద్రించబడ్డాయో లేదో జాగ్రత్తగా పరిశీలించండి.
- సమాధానాలను గుర్తించడానికి ప్రత్యేకంగా OMR సమాధాన పత్రాన్ని ఇవ్వడం జరుగుతుంది. అందులో హాల్ టికెట్ నంబరు, క్వశ్చన్ బుక్ లెట్ నంబర్, వెన్యూ కోడ్, పేరు, అభ్యర్థి సంతకం, ఇన్విజిలేటర్ సంతకాలకు సంబంధించిన వివరాలు నింపడానికి గడులు కేటాయించబడి ఉంటాయి. గడులను నింపటానికి నీలి/నలుపు (బ్లూ/బ్లాక్) బాల్ పాయింట్ పెన్సులను మాత్రమే ఉపయోగించాలి.
- ప్రశ్నా పత్రం లో కానీ OMR, సమాధాన పత్రం లో కానీ ఏవైనా లోపాలుంటే వాటిని మార్చవలసిందిగా వెంటనే ఇన్విజిలేటర్ ను కోరవచ్చు.
- సమాధాన పత్రాలను ఆప్టికల్ మార్కింగ్ సాధన పరికరాలలో మూల్యాంకనం చేస్తారు. కాబట్టి దానిపైన ఉన్న వృత్తాలను (జవాబులకు సంబంధించిన వృత్తాలతో సహా) నింపటానికి బ్లూ/బ్లాక్ బాల్ పాయింట్ పెన్సులను మాత్రమే ఉపయోగించాలి. పెన్సిల్ లేదా ఇంకు పెన్సు లేదా జెల్ పెన్సులతో బబ్లింగ్ చేయడం పరీక్షలో అనుమతించబడదు. OMR సమాధాన పత్రములో అభ్యర్థి తప్పులు వ్రాసిన/ద్రిష్టిన యెడల దానిని మార్చి ఇంకొకటి ఎట్ట పరిస్థితుల్లో ఇవ్వడం జరగదు.
- ప్రశ్నాపత్రం పై క్వశ్చన్ బుక్ లెట్ నంబర్ ముద్రించబడి ఉంది. ఇది ప్రశ్నాపత్రం కవర్ పేజీ పై కుడి మూలన ముద్రించబడి ఉంది. ఈ క్వశ్చన్ బుక్ లెట్ నంబర్ ను మీ సమాధాన పత్రం (OMR) యొక్క సైడ్-1-లో దానికి కేటాయించబడిన స్థలంలో బ్లూ/బ్లాక్ బాల్ పాయింట్ పెన్సుతో జాగ్రత్తగా నింపాలి.
క్వశ్చన్ బుక్ లెట్ నంబర్ నింపడానికి ఉదా :
ఒకవేళ మీ క్వశ్చన్ బుక్ లెట్ నంబర్ '102365' అయితే దాన్ని కింది విధంగా నింపాలి :

Question Booklet No.

1	0	2	3	6	5
●	●	●	●	●	●
●	●	●	●	●	●
●	●	●	●	●	●
●	●	●	●	●	●
●	●	●	●	●	●
●	●	●	●	●	●
●	●	●	●	●	●
●	●	●	●	●	●
●	●	●	●	●	●
●	●	●	●	●	●

OMR సమాధాన పత్రం యొక్క సైడ్ 1-లో మీ బుక్ లెట్ నంబర్ను నింపక పోయినచో ఎటువంటి నోటీసు ఇవ్వకుండానే మీ సమాధాన పత్రం మూల్యాంకనం నిలిపివేయబడును. ఒక వేళ దానిని సరిగ్గా గుర్తించేలా నింపక పోయినచో ఫలితం తప్పుగా వచ్చే అవకాశం లేదా మీ సమాధాన పత్రం తిరిగిస్తుంపటి అవకాశం వుంటుంది. దానికి అభ్యర్థి పూర్తి భాద్యత వహించాలి వుంటుంది.

- ప్రతి ప్రశ్నకు నాలుగు బిచ్చికాలు ఇవ్వబడతాయి. వీటిలో ఒకదానిని సమాధానంగా ఎంచుకోవాలి. సమాధాన పత్రంలో దానికి సంబంధించిన వృత్తాన్ని నింపవలెను. ఒకటి కన్నా ఎక్కువ వృత్తాలను నింపినచో ఆ సమాధానం పరిగణించబడదు. వృత్తాలను పూర్తిగా నింపటానికి బ్లూ/బ్లాక్ బాల్ పాయింట్ పెన్సులను మాత్రమే ఉపయోగించాలి. మరే విధమైన గీతలు గీయటం గాని మరకలను అంటించటం గాని చేయరాదు.

ఉదా :- 1వ ప్రశ్నకు సమాధానం (2) అయితే దాన్ని ఈ క్రింది విధంగా నింపాలి :

1	①	●	③	④
---	---	---	---	---

INSTRUCTIONS TO CANDIDATES

- Please check the Question Booklet immediately on opening and ensure that it contains all the 150 multiple choice questions printed on it.
- Separate Optical Mark Reader (OMR) Answer Sheet is supplied to you. The OMR Answer Sheet contains boxes for filling Hall Ticket Number, Question Booklet Number, Venue Code, Signature of the Candidate and Invigilator. Fill the boxes with Blue/Black ball point pen only.
- If there is any defect in the Question Paper Booklet or OMR Answer Sheet, please ask the invigilator for replacement immediately.
- Since the answer sheets are to be scanned (valued) with Optical Mark Scanner system, the candidates have to USE BALL POINT PEN (BLUE/BLACK) ONLY for darkening the circles in the OMR Answer Sheet including bubbling the answers. Bubbling with Pencil/Ink Pen/Gel Pen is not permitted in the examination. If any mistake is done by you on the OMR Answer Sheet, it will not be replaced.
- The Question Booklet number is printed on the right corner of the cover page of the Question Booklet. Mark your Question Booklet number on side 1 of the OMR Answer Sheet by darkening the appropriate circles with Blue/Black ball point pen.

Example to fill up the Question Booklet number

If your Question Booklet number is '102365', please fill as shown below :

Question Booklet No.

1	0	2	3	6	5
●	●	●	●	●	●
●	●	●	●	●	●
●	●	●	●	●	●
●	●	●	●	●	●
●	●	●	●	●	●
●	●	●	●	●	●
●	●	●	●	●	●
●	●	●	●	●	●
●	●	●	●	●	●
●	●	●	●	●	●

85
101

If you have not darkened the Question Booklet number on side 1 of the OMR Answer Sheet your Answer Sheet will be invalidated without any further notice. If it is darkened in a way that it leads to discrepancy in determining the exact Question Booklet number, then it may lead to wrong result/rejection of the Answer Sheet and candidate himself/herself will be responsible for the same.

- Each question is followed by 4 answer choices. Of these, you have to select one correct answer and mark it on the Answer Sheet by darkening the appropriate circle for the question. If more than one circle is darkened, that answer will not be valued at all. Use Blue/Black Ball point pen to fill the circle completely. Make no other stray marks.

e.g. : If the answer for Question No. 1 is Answer choice (2), it should be marked as follows :

1	①	●	③	④
---	---	---	---	---



1. A large cube is painted on all six faces. Now it is cut into a certain number of smaller identical cubes. It was found that among the smaller cubes, there were eight cubes which don't have any faces painted. How many small cubes have exactly two faces painted ?

- (1) 18 (2) 24
(3) 6 (4) 12

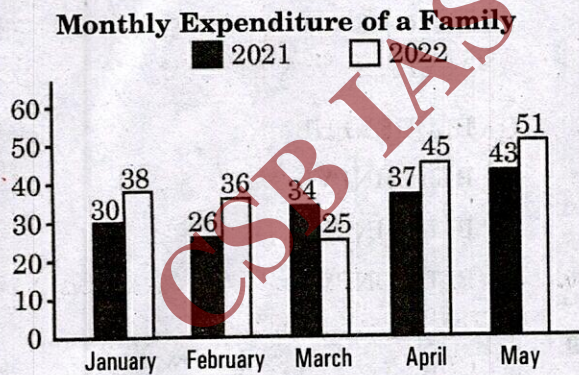
2. If $AB39 + C6B8B = 4292C$, what is the value of $A + 2B + 3C$? (Three alphabets A, B and C represent three different digits from 1 to 9. No number is represented by more than one alphabet)

- (1) 21 (2) 22
(3) 23 (4) 24

3. In a certain code language SORT is coded as 2169, TEST is coded as 5122, DOG is coded as 368 and GOAT is coded as 6243. What will be the code of ROAST in the same language ?

- (1) 21946 (2) 49623
(3) 91463 (4) 64829

4. The following bar chart shows the monthly expenditure of a family (in ₹ thousands) for five months for two years. What is the ratio between the average monthly spending of 2021 and 2022 ?



- (1) 32 : 37 (2) 34 : 37
(3) 33 : 37 (4) 34 : 39

5. A watch loses 5 minutes every hour and was set right at 8 AM on a Wednesday. When will it show the correct time again ?

- (1) 8 AM on Wednesday
(2) 8 PM on Wednesday
(3) 8 AM on Tuesday
(4) 8 PM on Tuesday

6. Ramu said to his son Raghav, "I was half your present age when you were born." If the present age of Ramu is 60 years, what was the age of the Ramu, when Raghav was born ? (in years)

- (1) 25 (2) 19
(3) 20 (4) 22

7. If $25 \# 5 = 5$, $10 @ 2 = 20$, $5 \& 3 = 8$ and $10 \$ 6 = 4$, then find the value of the following :

$20 \$ 6 @ 1 \& (20 \# 10)$

- (1) 16 (2) 22
(3) 20 (4) 18

8. What is the sum of all 2-digit numbers in the following series ?

1, 8, 15, 22,

- (1) 741 (2) 742
(3) 750 (4) 759

9. A, B, C, D, E and F are places belonging to different groups or possessing different identities. A is not a hill station. B and E are not historical places. D and F are not industrial cities. A and D are not historical places. A and B are alike. Which city is an industrial city and a hill station but not a historical place ?

- (1) F (2) C
(3) B (4) E

10. What is the missing term in the following series ?

ANBO, _____, DQER, FSGT

- (1) CPRS (2) CPBO
(3) CPDQ (4) CRGT

11. A man showed the photograph of a boy and said, "The boy in the photograph is the son of the daughter of the father of my brother." How is the man related to the boy in the photograph ?

- (1) Maternal uncle (2) Grandfather
(3) Father (4) Brother

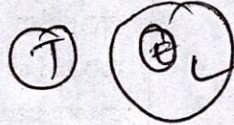


12. Two statements followed by four conclusions numbered I, II, III and IV are given below. Read the statements carefully and then decide which of the given conclusions logically follows the given statements, disregarding the commonly known facts.

Statements :

No tiger is elephant.

All elephants are lions.



Conclusions :

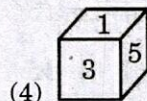
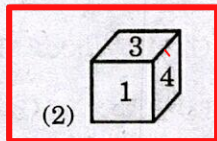
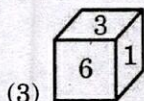
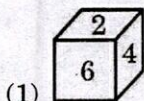
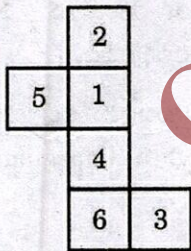
- I. Some lions are tigers. ✓
 II. All lions are tigers. ✗
 III. Some lions are elephants. ✓
 IV. Some lions are not elephants. ✓

- (1) Only conclusions III and IV follow ✓
 (2) Only conclusions II, III and IV follow ✗
 (3) Only conclusions I and II follow ✗
 (4) Only conclusions I, II and III follow ✗

13. The product of the ages of Ram and Shyam is 240. If twice the age of Shyam is more than Ram's age by 4 years, what is Shyam's age? (in years)

- (1) 24
 (2) 44
 (3) 12
 (4) 20

14. The following figure has been folded to make a box. Choose the right box that can be formed from the given figure.



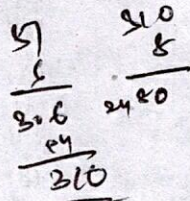
15. If 15th June, 2023 falls on Thursday, what will be the week-day on 24th October, 2028 ?

- (1) Friday
 (2) Tuesday
 (3) Wednesday
 (4) Thursday

16. Identify the number which does *not* fit in the following series :

5, 12, 51, 311, 2497, 24961

- (1) 2497
 (2) 24961
 (3) 51
 (4) 311



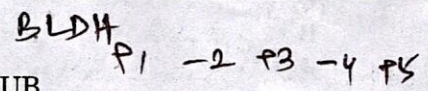
17. If P = +, Q = ×, R = ÷, S = - and T = '% of', then the value of

225 Q 3 R 15 S 20 P 67 S 20 T 160 =

- (1) 55
 (2) 60
 (3) 45
 (4) 50

18. In a certain code language, the word GENETICS is coded as HCQAYCJK. What is the code for ANALYTICS in the same language?

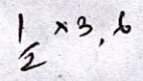
- (1) BLDHENPUB
 (2) BLDDHNPVB
 (3) BLDDHNPUB
 (4) BLDHDNPVB



19. Find the next term in the following series :

9, 4·5, 13·5, 74·25, 594, ?

- (1) 6534
 (2) 6831
 (3) 6237
 (4) 5940



20. What is the missing number in the following series ?

7, 8, 20, ?, 292, 1485

- (1) 45
 (2) 69
 (3) 50
 (4) 55



21. Arrange the following in ascending order based on the sectorwise TS-iPASS investment (in ₹ crores) in 2020 - 21 :

A. Solar and other renewable energy	3039
B. Thermal Power Plants	0
C. Fertilizers	72
D. Pharmaceuticals and Chemicals	4694

Choose the correct order :

- (1) A, B, C, D
 (2) C, D, B, A
 (3) B, C, D, A
 (4) B, A, D, C

B → C → A → D

No correct answer

22. Consider the following pairs in relation to incentives offered under Telangana Textiles and Apparel Policy 2017 - 22 :

Incentive Type	Incentive
A. Capital subsidy	: Up to ₹ 40 crore
B. Interest subsidy	: 6% per annum for 8 years
C. Power subsidy	: Up to ₹ 1.5 per unit
D. SGST reimbursement	: 100% for 7 years

Which of the above given pairs are correctly matched ?

- (1) A and D only
 (2) A, B, C and D
 (3) A and C only
 (4) B and D only

23. Match the following in relation to the broad pillars of the Telangana Innovation Policy - 2016 :

Name of Pillar	Pillar Number
A. Human Capital	I. One
B. Physical Infrastructure and Programme Management Capabilities	II. Three
C. Funding Models and Capital	III. Two
D. Engagement with Industry	IV. Four

Choose the correct answer :

- (1) A-II; B-III; C-I; D-IV
 (2) A-III; B-IV; C-II; D-I
 (3) A-I; B-II; C-IV; D-III
 (4) A-II; B-I; C-III; D-IV

A-II
 B-I
 C-III
 D-IV

24. Which of the following statements related to Rythu Bandhu Scheme of Telangana State is/are correct ?

- A. In 2020 - 21 Telangana budget, 65.4% of agricultural budget was earmarked for Rythu Bandhu Scheme.
 B. In 2020 - 21 Telangana budget, 7.7% of total budget was earmarked for Rythu Bandhu Scheme.
 C. Telangana government launched Rythu Bandhu Scheme in 2016.
 D. In the year 2020, 80% of Rythu Bandhu Scheme beneficiaries were marginal and small farmers.

Choose the correct answer :

- (1) A, B and D only
 (2) A and C only
 (3) D only
 (4) B only



25. What are the objectives of the Development Monitoring and Evaluation Office (DMEO)?

- A. Develop centralised depository of data informatics
- B. Enable data-driven policy making
- C. Institutionalising rigorous tracking of performance metrics
- D. Strengthening the whole ecosystem to mainstream rigorous outcome monitoring and evaluation

Choose the correct answer :

- ~~(1) B and D only~~
- (2) B, C and D only
- ~~(3) A, B and C only~~
- ~~(4) A, C and D only~~

26. Which of the following recommended for the establishment of the Public Record Offices as an independent authority by both, the Government of India and State Governments?

- (1) The Second Administrative Reforms Commission
- ~~(2) The Parliamentary Joint Working Group on Right to Information~~
- ~~(3) Supreme Court judgement on Girish Ramchandra Deshpande vs. Central Information Commission~~
- ~~(4) The NITI Aayog Task Force on Good Governance~~

27. Consider the following in relation to the MGNREGA :

- A. Wage seekers are the primary stakeholders of the MGNREGA.
- B. The Field Officer recommends the works to be taken up under MGNREGA.
- C. Gram Sabha conducts social audit on implementation of the scheme.

Which of the above statements is/are correct ?

- ~~(1) A, B and C~~
- ~~(2) C only~~
- ~~(3) A and B only~~
- (4) A and C only

28. Which of the following is not matched correctly in relation to the year of enacting ?

- ~~(1) 2009 : The RTE Act~~
- (2) 2012 : The National Food Security Act
- ~~(3) 2005 : The Right to Information Act~~
- (4) 2005 : The MGNREG Act

29. In relation to the organisational framework of the NITI Aayog, which of the following is not matched correctly?

- (1) Ex-officio Members : Maximum Four
- (2) Chief Executive Officer : Appointed by the President for a three-year tenure
- ~~(3) Chairperson : Prime Minister of India~~
- ~~(4) Part-time Members : Maximum Two~~

30. Consider the following statements in relation to the Foreign Trade Policy of the Government of India :

A. Foreign Trade Policy is a set of guidelines and instructions established by the Directorate General of Foreign Trade (DGFT) in matters related to the import and export of goods in India.

B. The Government of India, Ministry of Finance announces Export Import Policy every five years.

Which of the above statements is/are correct ?

- ~~(1) Both A and B~~
- ~~(2) Neither A nor B~~
- (3) A only
- ~~(4) B only~~

31. The services of Health and Wellness Centres (HWCs) under Ayushman Bharat include :

- A. Care in pregnancy and childbirth
- B. Management of Communicable Diseases
- C. Basic Oral Health Care
- D. Screening and basic management of mental health ailments

Choose the correct answer :

- ~~(1) A only~~
- ~~(2) B and C only~~
- (3) A, B, C and D
- ~~(4) A and B only~~

32. Trade Infrastructure for Export Scheme (TIES) is mainly implemented by the

- ~~(1) Ministry of Finance, Government of India~~
- ~~(2) Ministry of Roads and Buildings, Government of India~~
- ~~(3) Ministry of Shipping, Government of India~~
- (4) Ministry of Commerce and Industry, Government of India



33. Match the following UN specialised agencies with their headquarters :

Agency	Headquarter
A. FAO	I. New York
B. UNIDO	II. Geneva
C. ILO	III. Rome
D. UNESCO	IV. Paris
	V. Vienna

Choose the correct answer :

- (1) A-V; B-IV; C-I; D-II
 (2) A-III; B-V; C-II; D-IV
 (3) A-IV; B-III; C-II; D-I
 (4) A-II; B-I; C-IV; D-V

34. The following was the major confrontation that brought the United States and the Soviet Union close to war :

- (1) Cuban Missile Crisis
 (2) Angolan Civil War
 (3) Congo Crisis
 (4) Suez Canal Crisis

35. Which of the following pairs are matched correctly ?

- (A) ASEAN Secretariat : Bangkok, Thailand
 (B) SAARC Secretariat : Kathmandu, Nepal
 (C) European Union (EU) : Brussels, Belgium
 (D) African Union (AU) : Addis Ababa, Ethiopia

Choose the correct answer :

- (1) B, C and D only
 (2) A and B only
 (3) A, B and C only
 (4) A, B, C and D

36. Consider the following statements in relation to the Tibetan issue :

- A. When China announced that it would be occupying Tibet, India sent a letter of protest proposing negotiations on the Tibet issue.
 B. In 1954, China and India concluded the Five Principles of Peaceful Coexistence, under which India acknowledged Chinese rule in Tibet.

Which of the above statements is/are correct ?

- (1) Both A and B
 (2) Neither A nor B
 (3) A only
 (4) B only

37. Consider the following statements in relation to the G-20 :

- A. The G-20 was founded in 1999 as a forum for the Finance Ministers and Central Bank Governors.
 B. The G-20 was upgraded to the level of Heads of State/Government in 2010.
 C. The expanded agenda of G-20 includes trade, sustainable development, health, agriculture, energy, environment, climate change and anti-corruption.

Which of the above statements are correct ?

- (1) B and C only
 (2) A and C only
 (3) A and B only
 (4) A, B and C

38. Arrange the following Second World War events in the chronological order :

- A. Normandy Campaign in Western France (1944)
 B. German - Soviet Non-aggression Pact (1939)
 C. The American atomic bombing of Hiroshima and Nagasaki (1944-45) (1945)
 D. Japan's attack on Pearl Harbour (1941)
 E. The Battle of Stalingrad (1942-43)

Choose the correct order :

- (1) E, B, D, A, C
 (2) B, D, E, A, C
 (3) D, C, A, E, B
 (4) A, D, C, E, B



39. Consider the following statements related to Industrial Corridor Development Programme in India :

- A. Government of India has adopted the strategy of developing industrial corridors in partnership with State Governments and private investors.
- B. The objective of this programme is to develop Greenfield Industrial regions/areas/nodes with sustainable infrastructure and ensure plug and play infrastructure at the plot level.

Which of the above statements is/are true ?

- (1) Both A and B
 (2) Neither A nor B
 (3) B only
 (4) A only

40. Match the following items of India's trade with value of foreign trade during April - November 2021 :

Items of Trade	Value of Foreign Trade (in USD Billions approximately)
A. Non-Petroleum exports	I. 200
B. Non-Petroleum imports	II. 231
C. Non-Petroleum, Non-Gems and Jewellery exports	III. 285
D. Non-Petroleum, Non-Gems and Jewellery imports	IV. 226

Choose the correct answer from the following :

- (1) A-I; B-IV; C-III; D-II
 (2) A-IV; B-III; C-I; D-II
 (3) A-III; B-II; C-IV; D-I
 (4) A-II; B-I; C-IV; D-III

41. Arrange the following States in ascending order based on amount of subsidy (in ₹ crores) released to these States by the Central Government in the year 2021 - 22 under North East Industrial and Investment Promotion Policy - 2007 :

- A. Arunachal Pradesh
 B. Manipur
 C. Meghalaya
 D. Mizoram

Choose the correct answer from the following :

- (1) C, B, A, D
 (2) B, D, C, A
 (3) D, A, C, B
 (4) A, D, B, C

42. Arrange in ascending order the annual growth rate (%) of the following products in 2021 - 22 for National Industrial Classification 2-digit category :

- A. Manufacture of food products
 B. Manufacture of rubber and plastic products
 C. Manufacture of chemicals and chemical products
 D. Manufacture of electrical equipment

Choose the correct answer from the following :

- (1) D, C, A, B
 (2) A, B, D, C
 (3) C, A, B, D
 (4) B, C, D, A

43. Arrange the following programmes/schemes in chronological order based on launching/implementation year of these programmes/schemes :

- A. Pradhan Mantri Awas Yojana (Urban)
 B. PM Street Vendor's AtmaNirbhar Nidhi
 C. Deendayal Antyodaya Yojana - National Rural Livelihoods Mission
 D. Pradhan Mantri Jan Dhan Yojana

Choose the correct answer from the following :

- (1) D, C, B, A
 (2) A, D, C, B
 (3) A, C, D, B
 (4) C, D, A, B



44. Which of the following statements related to Soil Health Card Scheme of the Central Government are true?
- A. This scheme was introduced in the year 2014 - 15. *(2015-16)*
 - B. In Cycle-I of this scheme, around 10.74 crore cards have been issued to farmers.
 - C. In Cycle-II of this scheme, around 12.47 crore cards have been issued to farmers.
 - D. Under Model Village Programme, around 3 crore cards have been issued to farmers.
- Choose the correct answer from the following :
- (1) B, C and D only
 - (2) A and D only
 - (3) B and C only
 - (4) **A and B only**

45. Which of the following are true in relation to 'Make in India' initiative?
- A. To facilitate investment ✓
 - B. To foster innovation ✓
 - C. To make India a hub for manufacturing, design and innovation ✓
 - D. To build best in class infrastructure ✓
- Choose the correct answer from the following :
- (1) **A, B, C and D**
 - (2) B, C and D only
 - (3) A and B only
 - (4) C and D only

46. To increase the availability and reduce cost of fertilisers, the Central Government introduced 'One Nation, One Fertiliser' under
- (1) 'Ekta Bharat' brand name
 - (2) 'Samaikya Bharat' brand name
 - (3) **'Bharat' brand name**
 - (4) 'Vishala Bharat' brand name

47. As per the annual report of NITI Aayog 2021 - 22, which of the following is not a domain of State Health Index of NITI Aayog?
- (1) **Best practices**
 - (2) Key inputs/processes
 - (3) Health outcomes ✓
 - (4) Governance and information ✓

48. Arrange the following States, among the bigger States, whose population densities were the highest as per the Census of India 2011, in descending order :
- A. Bihar ✓ *(1106)*
 - B. Kerala *(860)*
 - C. Haryana *(573)*
 - D. Uttar Pradesh *(829)*
 - E. West Bengal *(1028)*
- Choose the correct order :
- (1) **A, E, B, D, C**
 - (2) A, D, E, B, C
 - (3) D, A, B, C, E
 - (4) B, E, C, D, A

49. Match the following States with child sex ratio (0 - 6 years) of these States in 2011 as per the 2011 Census :
- | State | Child sex ratio (0 - 6 years) |
|----------------------|-------------------------------|
| A. Haryana | I. 941 |
| B. Rajasthan | H. 888 |
| C. Arunachal Pradesh | III. 834 |
| D. Odisha | IV. 972 |
- Choose the correct answer :
- (1) A-IV; B-I; C-III; D-II
 - (2) A-I; B-IV; C-II; D-III
 - (3) A-II; B-III; C-I; D-IV
 - (4) **A-III; B-II; C-IV; D-I**

50. Consider the following pairs :
- A. PM-MITRA Scheme *(Textiles)* : Related to improving transport facility
 - B. Udyami Bharat Scheme : Related to MSMEs
 - C. RAMP Scheme *(MSMEs)* : Related to large scale manufacturing sector
 - D. Phase-II of FAME India *(EVs)* : Related to giving push to electric vehicles in public transport
- Which of the above given pairs are correctly matched?
- (1) **B and D only**
 - (2) A only
 - (3) B and C only
 - (4) A, C and D only



51. Consider the following statements related to women's work :

- A. According to an OECD report, women spend between two to ten times more time on care work than men. ✓
- B. According to the 2019 NSS Report, women spend 299 minutes a day on unpaid domestic services while men spend 97 minutes. ✓ *W-7.2 hrs; M-2.8 hrs*
- C. According to the Global Gender Gap Report (2021) only 22.3% women in India participate in the labour market. ✓
- D. Pradhan Mantri Gramin Digital Saksharta Abhiyaan (PMGDISHA) aims to enable women in rural areas to spend more time in care work at home. ✓

Which of the above statements are correct ?

- (1) A, C and D only
- (2) A, B, C and D
- (3) A, B and C only
- (4) A, B and D only

52. The Child Labour (Prohibition and Regulation) Act, 1986 was recommended by

- (1) Narasimham Committee
- (2) Gurupadswamy Committee
- (3) Dave Committee
- (4) Kothari Commission

53. As per the Transgender Persons (Protection of Rights) Act, 2019, who among the following can issue the certificate of identity for a transgender person ?

- (1) The District Magistrate
- (2) The elected Sarpanch of the village or the Chairperson in case of Municipality
- (3) The Chief Medical Officer of the area hospital
- (4) The Medical Superintendent of the area hospital

54. The Integrated Education for Disabled Children (IEDC) scheme was launched in

- (1) 1984
- (2) 1994
- (3) 1970
- (4) 1974

55. Gender equality contributes to

- A. Achieving peaceful and resilient communities ✓
- B. Sustainable development ✓
- C. Economic growth ✓
- D. Women dominance ✓

Which of the above are correct ?

- (1) A, B and D only
- (2) A, B, C and D
- (3) A, B and C only
- (4) A, C and D only

56. Clause 9 of the Prohibition of Employment as Manual Scavengers and their Rehabilitation Act, 2013 states that *Clause → section*

- (1) The violator of the provisions of clause 7 shall be punished with imprisonment for a term which may extend to two years or with fine which may extend to two lakh rupees or with both
- (2) The violator of the provisions of clause 8 shall be punished with imprisonment for a term which may extend to two years or with fine which may extend to two lakh rupees or with both
- (3) The violator of the provisions of clause 5 shall be punished with imprisonment for a term which may extend to two years or with fine which may extend to two lakh rupees or with both
- (4) The violator of the provisions of clause 6 shall be punished with imprisonment for a term which may extend to two years or with fine which may extend to two lakh rupees or with both



57. Match the following :

- | <i>Sustainable Development Goals (SDGs)</i> | <i>Targets</i> |
|---|--|
| A. SDG Target 2-2 | I. Reduce the global maternal mortality ratio to less than 70 per 1,00,000 live births |
| B. SDG Target 3-1 | II. Ensure universal access to sexual and reproductive health-care services |
| C. SDG Target 3-3 | III. End all forms of malnutrition |
| D. SDG Target 3-7 | IV. End the epidemics of AIDS, tuberculosis, malaria and neglected tropical diseases |

Choose the correct answer :

- (1) A-III; B-I; C-II; D-IV
 (2) A-III; B-IV; C-I; D-II
 (3) A-II; B-I; C-IV; D-III
 (4) A-III; B-I; C-IV; D-II

58. Consider the following statements on Tribal Sub-Plan (TSP) :

- A. Tribal Sub-Plan came into existence in 1974 - 75.
 B. After the merger of Plan and Non-Plan, the TSP was renamed as Scheduled Tribe Component (STC) by the Ministry of Tribal Affairs.
 C. State Governments have to earmark TSP funds in proportion to ST population (Census 2011) in the State with respect to Total State Plan.
 D. In FY 2018 - 19, the monitoring of STC plan was given to Ministry of Tribal Affairs.

Which of the above statements are correct ?

- (1) A, C and D only
 (2) A, B, C and D
 (3) A, B and C only
 (4) A, B and D only

59. Consider the following pairs :

- | | |
|--|-------------------------------|
| A. Father of Green Revolution | : M.S. Viswanathan |
| B. Missile Man of India | : A.P.J. Abdul Kalam |
| C. First Indian to go to outer space | : Sunita Williams |
| D. First Indian remote sensing satellite | : APPLE |

Identify the wrongly matched pairs :

- (1) A, B and C
 (2) B, C and D
 (3) A, B and D
 (4) A, C and D

60. Match the following :

- | <i>Emerging Trend</i> | <i>Example</i> |
|---|------------------------|
| A. Humanoid based on Artificial Intelligence (AI) | I. Virtual Reality |
| B. Natural language processing | II. Drone |
| C. Unmanned aircraft | III. Text-to-Speech |
| D. Operating household devices using smartphone | IV. Internet of Things |
| | V. Sophia |

Choose the correct answer :

- (1) A-V; B-III; C-II; D-IV
 (2) A-II; B-IV; C-V; D-III
 (3) A-V; B-IV; C-I; D-II
 (4) A-II; B-III; C-V; D-I



61. Consider the following statements :

- A. Circadian rhythm is endogenous rhythmic change in organism with a periodicity of 24 hours.
- B. Biological clock regulates circadian rhythm.
- C. Sleep and awake phases of humans are due to circadian rhythm.
- D. Heart-beat of humans is an example of circadian rhythm.

Which of the above statements are correct ?

- (1) B, C and D only
- (2) A, B and C only
- (3) A, B and D only
- (4) A, C and D only

62. Match the following with the corresponding nanomaterial used in it :

- | | |
|-------------------------------|---------------------|
| A. Sunscreen lotion | I. Nano silver |
| B. Textiles | II. Quantum dots |
| C. Optoelectronics | III. Titanium oxide |
| D. High-definition television | IV. Zinc selenide |
| | V. Lithium oxide |

Choose the correct answer :

- (1) A-II; B-III; C-IV; D-V
- (2) A-I; B-IV; C-III; D-II
- (3) A-III; B-I; C-II; D-IV
- (4) A-IV; B-II; C-III; D-V

63. Consider the following statements :

- A. Optimal usage of inorganic fertilizers and pesticides increases crop production.
- B. Pesticides are toxic to non-target organisms.
- C. Excess fertilizer residue loaded water inflow leads to eutrophication of lakes.
- D. Biomagnification of harmful chemicals poses a threat to human health.

Which of the above statements are correct ?

- (1) A, B and D only
- (2) A, B, C and D
- (3) A, B and C only
- (4) A, C and D only

64. Consider the following pairs :

- A. Electrostatic precipitator : Particulate matter
- B. Catalytic converter : Carbon monoxide and nitrogen oxides
- C. Terror of Bengal : Water hyacinth (*Eichhornia crassipes*)
- D. Biochemical oxygen demand (BOD) : Polluted water

Identify the correctly matched pairs :

- (1) A, C and D only
- (2) A, B, C and D
- (3) A and B only
- (4) A and C only

65. Consider the following statements :

- A. National Technology Day is commemorated on May 11 every year as India successfully conducted nuclear tests in Pokhran.
- B. Agni-III is India's latest long range surface-to-surface nuclear capable ballistic missile system that was successfully tested in 2018.
- C. Mangalyaan was launched on 5th November, 2013 with the aim of studying the Moon's topography, morphology, mineralogy and atmosphere.
- D. U.R. Rao was the Chairman of the Indian Space Research Organisation when the first-ever Indian satellite Aryabhata was launched.

Identify the wrong statements :

- (1) A, C and D
- (2) A, B and D
- (3) A and D
- (4) B and C



66. The temperature in human body is controlled by

- (1) Cerebellum (2) Muscles
(3) Hypothalamus (4) Skin

67. The chemical used in airbags of vehicles that releases nitrogen to explode balloons in case of accidents is

- (1) Silver nitrate
(2) Potassium nitrate
(3) Sodium azide
(4) Sodium nitrite

68. Akash missile is developed and produced by

- (1) ISRO and DERL
(2) Russia and DERL
(3) DRDO and BDL
(4) NEC and BARC

69. Match the Nobel Prize awardees and their work for 2022 :

- A. Ales Bialiatiski : Nanomaterials and their applications
B. Svante Paabo : Genome of extinct hominins and human evolution
C. Alain Aspect, John F. Clauser and Anton Zeilinger : Photons in Quantum entanglement, information science and cryptography
D. Carolyn R. Bertozzi, Morten Meldal, K. Barry Sharpless : Click chemistry and bioorthogonal chemistry

Choose the correct pair(s) :

- (1) A, B and C only
(2) B, C and D only
(3) A only
(4) D only

70. Integrated chip is produced on a piece of semi-conductor crystal by the process of

- (1) Tomography (2) Cryptography
(3) Embedding (4) Photolithography

71. Dieback disease in neem tree is caused by

- (1) Fungi (2) Algae
(3) Iron deficiency (4) Virus

72. Consider the following :

- A. Gaganyaan : ISRO plans ^{3-day} seven-day space tour with three gaganauts in 2023 for science and technology advancement.
B. Vyommitra : A humanoid robot sent along with gaganauts to manage the environmental information.

Which of the above is/are correct ?

- (1) Both A and B
(2) Neither A nor B
(3) A only
(4) B only

73. Consider the following statements :

- A. BOD is oxygen consumed by micro-organisms and is an index of water pollution.
B. Drinking water should have BOD level of 1 to 2 ppm.

Which of the above statements is/are correct ?

- (1) Both A and B
(2) Neither A nor B
(3) A only
(4) B only

74. Consider the following statements :

- A. Nuclear fuel is material used in nuclear power stations to produce heat to run turbines.
B. Thorium is used as a nuclear fuel in India.

Which of the above statements is/are correct ?

- (1) Both A and B
(2) Neither A nor B
(3) A only
(4) B only



75. Match the following :

- | | | |
|--------------------|--------------|-----------------------|
| A. Calciferol | → | I. Beri beri |
| B. Thiamine | → | II. Rickets |
| C. Cyanocobalamine | → | III. Scurvy |
| D. Ascorbic acid | → | IV. Pernicious anemia |
| | | V. Goitre |

Choose the correct answer :

- (1) A-IV; B-I; C-III; D-II
 (2) A-V; B-III; C-I; D-IV
(3) A-II; B-I; C-IV; D-III
 (4) A-II; B-IV; C-III; D-V

76. Arrange the following in order with respect to the urine formation in human beings :

- A. Formation of concentrated urine (4)
 B. Tubular reabsorption (2)
 C. Glomerular filtration (1)
 D. Tubular secretion (3)

Choose the correct order :

- (1) B, A, D, C
 (2) A, D, B, C
(4) C, B, D, A

77. The sequence of geological composition from the depth to the surface of the Earth is :

- (1) Outer core → Inner core → Crust → Mantle
(2) Inner core → Outer core → Mantle → Crust
 (3) Crust → Mantle → Inner core → Outer core
 (4) Mantle → Crust → Inner core → Outer core

78. Match the following :

- | | | |
|------------------|--------------|------------------|
| A. Malaria | → | I. Plasmodium |
| B. Elephantiasis | → | II. Filaria |
| C. Typhoid | → | III. Clostridium |
| D. Tetanus | → | IV. Wuchereria |
| | → | V. Salmonella |

Choose the correct answer :

- (1) A-I; B-IV; C-III; D-II
(2) A-I; B-IV; C-V; D-III
 (3) A-I; B-II; C-III; D-V
 (4) A-I; B-III; C-V; D-IV

79. Which of the following statements about Salhoutuonuo Kruseis is/are correct ?

- A** She was one of the first women to be elected to the 60-member Nagaland Assembly.
B She was sworn in as the first woman minister of Nagaland.
C She has been allotted the portfolio of Education. (Women, Horticulture)

Choose the correct answer :

- (1) A only
 (2) B and C only
 (3) A, B and C
(4) A and B only

80. The Kerala Shipping and Inland Navigation Corporation (KSINC) has introduced the first solar-powered, double-decked, hybrid boat for the promotion of tourism in the State in April 2023. What is the name of the boat ?

- (1) Soorya Nakshatra
 (2) Sooryodayam
 (3) Soorya Ratham
(4) Sooryamshu

81. A 'Six-Nation Cycling Expedition 2023' was carried out by a team of the National Institute of Mountaineering and Adventure Sports (NIMAS) from January to March 2023. Which of the following countries were part of this cycling expedition ?

- A. Vietnam ✓
 B. Bangladesh
 C. Cambodia ✓
 D. Thailand ✓
 E. Sri Lanka

Choose the correct answer :

- (1) A, C, D and E only
 (2) A, B, C and E only
 (3) A, B and C only
(4) A, C and D only

82. Which of the following statements about NISAR are correct ?

- A** It is an Earth-Observation satellite, jointly developed by the NASA and ISRO.
B It was envisioned by NASA and ISRO eight years ago in 2014. (2011)
C It is expected to be launched in January 2024 from Satish Dhawan Space Centre.
D It is a High Earth Orbit (HEO) observatory and will operate for a minimum of ten years.

Choose the correct answer :

- (1) A, B, C and D
 (2) A and D only
 (3) A and B only
(4) A, B and C only



83. Who among the following has been elected as the head of the New Development Bank (NDB), a multilateral financial institution set up by the BRICS, in 2023 ?

- (1) Anton Germanovich Siluanov, former Finance Minister of Russia
- (2) Johannes Gerhardus Strijdom, former Prime Minister of South Africa
- (3) Former Brazilian President Dilma Rousseff
- (4) Former Chinese Finance Minister Liu Kun

84. Which of the following statements regarding 'Olkiluoto-3' Reactor are correct ?

- A. It is Europe's most powerful nuclear reactor.
- B. It was developed in a joint venture between France's Areva and Germany's Siemens.
- C. Construction of Olkiluoto-3 began in 2005 and is now ready after a delay of 14 years from the original plan.
- D. It will help Belgium to achieve energy security at a time when European countries have cut oil, gas and other power supplies from Russia.

Choose the correct answer :

- (1) A, B, C and D
- (2) B, C and D only
- (3) A and B only
- (4) A, B and C only

85. Consider the following statements :

- A. Marburg Virus Disease (MVD), earlier known as Marburg haemorrhagic fever, is a severe, often fatal, haemorrhagic fever, according to the WHO.
- B. The Tanzanian Government reported the outbreak of the MVD in March 2023 in its north-west Kagera region.

Which of the above statements is/are correct ?

- (1) Both A and B
- (2) Neither A nor B
- (3) A only
- (4) B only

86. The Government of India announced setting up of the PM MITRA mega textile parks in the following States :

- A. Tamil Nadu
- B. Gujarat
- C. Tripura
- D. Telangana

Choose the correct answer :

- (1) A, C and D only
- (2) A, B and D only
- (3) B and C only
- (4) A, B, C and D

87. Which of the following won the World Summit on the Information Society (WSIS) Prize 2023 ?

- (1) IndiaOnline - which facilitates online grievance redressal mechanism
- (2) India Investment - which facilitates online investment for startups
- (3) AuditOnline - which facilitates online audits across Panchayati Raj Institutions
- (4) IndiaAudit - which facilitates online audits across GST departments

88. Consider the following statements regarding 'The Elephant Whisperers', the documentary that won an Oscar Award in 2023 :

- A. The documentary tells the story of an indigenous couple named Bomman and Bellie as they care for an orphaned baby elephant.
- B. The documentary was shot in Nagarhole National Park, Kodagu, Karnataka.

Which of the above statements is/are correct ?

- (1) Both A and B
- (2) Neither A nor B
- (3) A only
- (4) B only

89. Which of the following research institute developed a pocket-friendly device to detect milk adulteration in 30 seconds ?

- (1) The National Dairy Research Institute (NDRI), Karnal, Haryana
- (2) The National Institute of Dairy Science and Technology (NIDST), Ludhiana, Punjab
- (3) IIT Madras
- (4) IICT Hyderabad



No correct answer

90. According to the National Organ and Tissue Transplant Organisation (NOTTO), the following States emerged as the top four in the number of deceased donor transplants in 2022. Arrange them in the descending order:

- A. Tamil Nadu (2)
 - B. Maharashtra (5)
 - C. Telangana (1)
 - D. Karnataka (3)
- Choose the correct order: **CADB**
- (1) C, D, B, A
 - (2) D, B, C, A
 - (3) B, C, A, D
 - (4) C, A, B, D

91. The second meeting of the Startup20 Engagement Group under India's G-20 Presidency was held at Gangtok in March 2023. Consider the following statements in relation to it:

- A. Mentoring, market access and funding were identified as critical areas for startups.
- B. The need for a single window platform for easing access to funds and knowledge sharing across G-20 nations was highlighted.
- C. The decision was taken to establish a common Startup20 with Chinese initiative at Shanghai.

Which of the above statements is/are correct ?

- (1) A, B and C
- (2) A and C only
- (3) A only
- (4) A and B only

92. Consider the following statements in relation to the performance of the Singareni Collieries Company Limited (SCCL) during 2022 - 23 :

- A. It has produced more coal than the previous financial year.
- B. It has transported little less than the previous financial year, due to the internal usage for its own thermal power stations.
- C. A majority of coal mines, opencast and underground, achieved 100% targets.

Which of the above statements is/are correct ?

- (1) A and C only
- (2) C only
- (3) A and B only
- (4) A, B and C

93. Consider the following statements in relation to the RBI's working paper "States' Fiscal Performance and Yield Spreads on Market Borrowings in India", released in January 2023 :

- A. The average debt to Gross State Domestic Product (GSDP) of Telangana from 2014 - 15 to 2018 - 19 was 16.1 per cent.
- B. The States' percentage of Own Revenue Generation in Total Receipts is deteriorating fast.

Which of the above statements is/are correct ?

- (1) Both A and B
- (2) Neither A nor B
- (3) A only
- (4) B only

94. According to data of the State Transport Department, there are 1.53 crore vehicles in Telangana as of March 2023. Arrange the following vehicles in the descending order, based on their numbers :

- A. Auto Rickshaws (4.55 lakhs)
- B. Motor Cars (20.14 lakhs)
- C. Goods Carriage Vehicles (6.09 lakhs)
- D. Tractors and Trailers (7.02 lakhs)

Choose the correct order :

- (1) A, B, D, C
- (2) A, C, D, B
- (3) D, A, B, C
- (4) B, D, A, C

95. Telangana State has bagged 13 out of 46 National Panchayat Awards 2023 (Appraisal year 2021 - 22). Match the following villages with their category of awards :

Village and District	Award Category
A. Gauthampur, Bhadradi Kothagudem	I. Water Sufficient Panchayat
B. Nellutla, Jangaon	II. Women-Friendly Panchayat
C. Kongatpally, Mahabubnagar	III. Healthy Panchayat
D. Aipoor, Suryapet	IV. Clean and Green Panchayat
	V. Socially Secured Panchayat

Choose the correct answer :

- (1) A-IV; B-II; C-I; D-III
- (2) A-V; B-II; C-I; D-III
- (3) A-II; B-III; C-IV; D-I
- (4) A-III; B-I; C-V; D-II

No correct answer

BDCA



1 - Finland | 3 - Iceland
 2 - Denmark | 4 - Israel.

96. Match the following countries based on their ranks in World Happiness Report (WHR), 2023 :

Country	Rank
A. Iceland	I. Rank One
B. Israel	II. Rank Two
C. Finland	III. Rank Three
D. Denmark	IV. Rank Four
	V. Rank Five

Choose the correct answer :

- (1) A-II; B-III; C-I; D-IV
 (2) A-III; B-IV; C-I; D-II
 (3) A-IV; B-II; C-III; D-V
 (4) A-II; B-I; C-IV; D-V

A	III
B	IV
C	I
D	II

97. Consider the following statements :

- A. Iraq has announced in March 2023 that it has discovered a large deposit of lithium, a key component of batteries for electric vehicles and electronic devices.
 B. According to United States Geological Survey (USGS) report published in 2022, a total of 89 million tons of lithium has been identified in the world with Australia, Chile, Argentina and China as the main producers.

Which of the above statements is/are correct ?

- (1) Both A and B
 (2) Neither A nor B
 (3) A only
 (4) B only

98. The United Nations has organised a Regional Workshop in March 2023 at Kathmandu, Nepal. What was the theme of the workshop ?

- (1) Eco Tourism in Asia Pacific : Promoting Sustainable Tourism
 (2) Sustainable Tourism in Asia and the Pacific : Promoting Healthy Practices
 (3) International Tourism : Boosting Economies of Asia Pacific
 (4) Measuring Tourism : Better data for better tourism in Asia and the Pacific

99. Which of the following is not a geological hazard ?

- (1) Tsunami ✓ (2) Volcano eruption ✓
 (3) Mine fire ✓ (4) Tropical cyclone

100. Consider the following statements :

- A. The National Disaster Management Act was enacted in 2005. ✓
 B. The National Disaster Management Authority (NDMA) is headed by the Prime Minister. ✓
 C. State Disaster Management Authority (SDMA) is headed by the Chief Minister. ✓

Which of the above statements is/are correct ?

- (1) A and B only (2) A, B and C
 (3) A only (4) B only

101. The following three important global events took place in 2005 :

- A. Paris Agreement on Climate Change, Paris (Dec)
 B. The Third International Conference on Financing for Development, Addis Ababa (July)
 C. Adoption of Sustainable Development Agenda, New York (Jan)

Choose the correct order of their occurrence :

- (1) B, C, A (2) C, A, B
 (3) A, B, C (4) B, A, C

102. Consider the following statements :

- A. Global surface temperature was 1.09°C (0.95°C - 1.20°C) higher in the decade 2011 - 2020 than in 1850 - 1900. ✓
 B. The global temperature increase is larger over the land 1.59°C [1.34°C - 1.83°C] than over the ocean 0.88°C [0.68°C - 1.01°C]. ✓

Which of the above statements is/are correct ?

- (1) Both A and B
 (2) Neither A nor B
 (3) A only
 (4) B only

103. In the context of air pollution in cities of India, choose the correct order of pollution in descending order for 2022 :

- A. Bhiwadi B. New Delhi
 C. Darbhanga D. Ghaziabad

Choose the correct order :

- (1) New Delhi - Bhiwadi - Darbhanga - Ghaziabad
 (2) Bhiwadi - Darbhanga - New Delhi - Ghaziabad
 (3) Ghaziabad - Darbhanga - New Delhi - Bhiwadi
 (4) Darbhanga - Ghaziabad - Bhiwadi - New Delhi



104. Arrange the following events in chronological order from earliest to latest :

- A. Rio Earth Summit (1992)
- B. Sendai Framework for Action (2015)
- C. Hyogo Framework for Action (2004)
- D. Yokohama Strategy (1994) - 00

Choose the correct order :

- (1) C, D, A, B
- (2) A, D, C, B
- (3) A, B, C, D
- (4) B, C, D, A

R-Y-4 S
A D C B

105. Consider the following statements :

- A. A deadly earthquake occurred in Bhuj, Gujarat.
- B. More than 20,000 people lost their lives in the earthquake.
- C. The earthquake occurred on the Independence Day, 2001. ? Aug 5
- D. Smriti Van Memorial for earthquake victims was inaugurated by the Prime Minister in August 2022 at Bhuj.

Which of the above statements are correct ?

- (1) B and D only
- (2) A, B and D only
- (3) A and B only
- (4) A, B and C only

106. In the context of effect of global warming, match the following :

Effect	Country / Region
A. Bush fires	I. Antarctica
B. Locust swarming	II. Arctic
C. Heat wave	III. Africa - Middle East
D. Permafrost melt	IV. Australia - USA

Choose the correct answer :

- (1) A-III; B-IV; C-I; D-II
- (2) A-III; B-IV; C-II; D-I
- (3) A-IV; B-III; C-I; D-II
- (4) A-I; B-IV; C-III; D-II

107. Identify the top three districts with highest share of forest area to their total geographical area in Telangana State (2020 - 21).

- (1) Mulugu, Kumuram Bheem Asifabad and Bhadradi Kothagudem
- (2) Bhadradi Kothagudem, Kumuram Bheem Asifabad and Adilabad
- (3) Mulugu, Jayashankar Bhupalpally and Kumuram Bheem Asifabad
- (4) Mulugu, Bhadradi Kothagudem and Kumuram Bheem Asifabad

108. According to the 2011 Census, which of the following newly formed districts have more than 40% urban population ?

- (1) Peddapalli
- (2) Mancherla
- (3) Warangal
- (4) Sangareddy

109. Consider the following statements related to IT industry in Telangana :

- A. During 2014 - 15, the IT exports from Telangana were worth ₹ 66,276 crore which almost tripled to ₹ 1,83,569 crore by 2021 - 22.
- B. Through the Growth in Diversity policy, the Government provides special incentives to the companies that expand or set up their IT units beyond the western part of Hyderabad.

Which of the above statements is/are correct ?

- (1) Both A and B
- (2) Neither A nor B
- (3) A only
- (4) B only



110. 'Zuider Zee', a tract of lowland reclaimed from a body of water in the Netherlands is known for :

- (1) Canyons
- (2) Geysers
- (3) Polders
- (4) Dykes

111. Consider the following statements related to Southern Telangana Agro-Climatic Zone :

- A. Medchal-Malkajgiri, Wanaparthy, Rangareddy and Vikarabad districts fall under this zone.
- B. The annual rainfall (June to May) ranges from 610 to 850 mm. Minimum and maximum temperatures during summer range between 32°C - 38°C.
- C. This zone is predominantly underlain by Alluvial soils. (Red soils)

Which of the above statements are correct ?

- (1) A and C only
- (2) A, B and C
- (3) A and B only
- (4) B and C only

112. Match the following Modern Indian Languages (Family) with the States/UT :

Language (Family)	State/UT
A. Austric	I. Meghalaya
B. Dravidian	II. Kerala
C. Sino-Tibetan	III. Arunachal Pradesh
D. Indo-European	IV. Jammu and Kashmir

Choose the correct answer :

- (1) A-IV; B-I; C-II; D-III
- (2) A-I; B-II; C-III; D-IV
- (3) A-II; B-I; C-III; D-IV
- (4) A-IV; B-II; C-III; D-I

113. Consider the following statements about 'Mascarene High' and its influence over monsoon rainfall in India :

- A. Mascarene High is a low pressure area that is found around Mascarene Islands (in South Indian Ocean) during monsoon period.
- B. Mascarene High is responsible for cross-equatorial flow through South Arabian Sea and it acts as southern hemispheric linkage.

Which of the above statements is/are correct ?

- (1) Both A and B
- (2) Neither A nor B
- (3) A only
- (4) B only

114. Consider the following statements regarding Ken-Betwa River Link Project (KBLP) for irrigation :

- A. It is critical for the water security and socio-economic development of Purvanchal region of Uttar Pradesh. (Bundelkhand)
- B. The project involves the transfer of water from the Betwa to the Ken River through the construction of Daudhan Dam.

Which of the above statements is/are correct ?

- (1) Both A and B
- (2) Neither A nor B
- (3) A only
- (4) B only

115. Consider the following pairs :

Iron and Steel Plant	State
A. Bhilai	: Chhattisgarh
B. Bokaro	: Jharkhand
C. Dolvi	: Maharashtra
D. Daitari	: Odisha

Identify the correctly matched pairs :

- (1) A, B and D only
- (2) A, B, C and D
- (3) A and B only
- (4) B and C only



116. Match the following ocean currents and their location/type :

Ocean Current	Location / Type
A. Benguela current	I. Warm current
B. Kuroshio current	II. Cold current
C. North Atlantic Drift	III. Pacific Ocean
D. Agulhas current	IV. Indian Ocean

Choose the correct answer :

- (1) A-IV; B-III; C-I; D-II
 (2) A-II; B-III; C-I; D-IV
 (3) A-II; B-III; C-IV; D-I
 (4) A-III; B-IV; C-I; D-II

117. The Census of India has classified towns into six categories on the basis of their population. Which of the following is **not** correctly matched ?

- (1) Class V towns with 5,000 to 9,999 population
 (2) Class VI towns with less than 5,000 population
 (3) Class II towns with 50,000 to 99,999 population
 (4) Class III towns with 30,000 to 49,999 population

118. Consider the following statements related to igneous rocks:

- A. Igneous rocks are granular or crystalline.
 B. They do not have strata-like sedimentary rocks.
 C. They are less affected by chemical weathering.
 D. Igneous rocks do not contain fossils.

Which of the above statements are correct ?

- (1) B, C and D only
 (2) A, B, C and D
 (3) A and B only
 (4) B and C only

119. Who among the following were the members of the Constituent Assembly of India ?

- A. Amarjit Kaur
 B. Begum Aizaz Rasul
 C. Hansa Jivraj Mehta
 D. Kamala Mukherjee
 E. Renuka Ray

Choose the correct answer :

- (1) B, C and E only
 (2) B, C, D and E only
 (3) A, B, D and E only
 (4) A, C and D only

120. Consider the following in relation to 'Operation Blue Star' :

- A. It was the biggest internal security mission undertaken by the Indian Army.
 B. It was aimed at removing Sikh militants who were accumulating weapons in the Harmandir Sahib Complex.
 C. Operation Blue Star was carried out between 1st and 8th July, 1985 in Amritsar.

Which of the above statements is/are correct ?

- (1) B and C only
 (2) B only
 (3) A and B only
 (4) A, B and C

121. Which of the following is **not** an appellate jurisdiction of the Supreme Court of India ?

- (1) Civil cases, irrespective of any constitutional question
 (2) Criminal cases, irrespective of any constitutional question
 (3) Cases involving disputes between two or more States
 (4) Cases involving interpretation of the Constitution



122. When there is a challenge to the legality of detention

- (1) the writ of mandamus is filed
- (2) the writ of quo warranto is filed
- (3) the writ of certiorari is filed
- (4) the writ of habeas corpus is filed

123. Consider the following statements :

- A. The Constitution commands justice, liberty, equality and fraternity as supreme values to usher in the egalitarian social, economic and political democracy.
- B. To establish an egalitarian social order, the trinity, the preamble, the fundamental rights and the directive principles of state policy delineate the path for socio-economic justice.

Which of the above statements is/are correct ?

- (1) Both A and B
- (2) Neither A nor B
- (3) A only
- (4) B only

124. Match the following Articles of the Constitution with their respective provisions :

Article	Provision
A. Article-19	I. Freedom to manage religious affairs subject to public order
B. Article-21	II. Prohibition of traffic in human beings and forced labour
C. Article-23	III. Protection of certain rights regarding freedom of speech
D. Article-26	IV. Protection against arrest and detention in certain cases
	V. Protection of life and personal liberty

Choose the correct answer :

- (1) A-V; B-IV; C-II; D-III
- (2) A-V; B-II; C-I; D-III
- (3) A-III; B-V; C-II; D-I
- (4) A-IV; B-III; C-I; D-II

125. Who among the following shall not be answerable to any court for the exercise and performance of powers and duties of their office ?

- A. President
- B. Prime Minister
- C. Law Minister
- D. Governor of a State

Choose the correct answer :

- (1) A and D only
- (2) A, B and D only
- (3) A, B and C only
- (4) A and B only

126. Consider the following :

- A. The prevention of concentration of wealth to the common determinant
- B. The protection of childhood and youth against exploitation
- C. Adequate means of livelihood to all citizens
- D. A proper distribution of the material resources of the community for common good

The above aspects are part of the :

- (1) State List of the Constitution
- (2) Fifth Schedule of the Constitution
- (3) Fundamental Rights of the Constitution
- (4) Directive Principles of the Constitution

127. Consider the following in relation to the Legislative Council :

- A. The Council is a permanent house and one-third of the members retire in two years.
- B. Members of local bodies elect one-third of the total number of members of the Legislative Council.
- C. One-twelfth shall be elected by electorates consisting of graduates of three years standing, residing in the State.

Which of the above statements are correct ?

- (1) A and C only
- (2) B and C only
- (3) A, B and C
- (4) A and B only



128. The TSR Subramanian Committee (2014) is associated with which of the following ?

- (1) Dissolution of the Muslim Marriage Act
- (2) Review the process, laws and acts of the Ministry of Human Resource Development
- (3) Indian efforts to counter internal and external terrorism
- (4) Review the processes, laws and acts of the Ministry of Environment, Forests and Climate Change

129. Consider the following statements :

- A. To be able to discharge the constitutional obligations fairly and impartially, the Governor should not be burdened with positions and powers which are not envisaged by the Constitution.
- B. Making the Governor the Chancellor of the Universities and thereby conferring powers on him/her which may have had some relevance historically has ceased to be so with the change of times and circumstances.

The above are the part of recommendations of the following :

- (1) New Education Policy - 2020
- (2) National Knowledge Commission
- (3) Justice M.M. Punchhi Commission
- (4) Kothari Commission

130. Consider the following statements :

- A. Article 356 in the Constitution of India deals with the proclamation of financial emergency.
- B. During the proclamation of financial emergency, the President can suspend provision relating to the division of the taxes between the Union and the States.

Which of the above statements is/are correct ?

- (1) Both A and B
- (2) Neither A nor B
- (3) A only
- (4) B only

131. During Kakatiya period, three Acharyas were popularly known as 'Pandita-traya'. Identify them.

- (1) Visvesvara Pandita, Mallikarjuna Pandita and Manchana Pandita
- (2) Sripati Pandita, Palkuriki Somanatha and Manchana Pandita
- (3) Mallikarjuna Pandita, Palkuriki Somanatha and Visvesvara Pandita
- (4) Sripati Pandita, Mallikarjuna Pandita and Manchana Pandita

132. Consider the following pairs :

<i>Churches</i>	<i>Location in Hyderabad</i>
-----------------	------------------------------

- A. St. John's Church : Bolaram
- B. Holy Trinity Church : Tirumalagiri
- C. St. Mary's Church : Secunderabad
- D. St. George's Church : Abids

Choose the correct pair :

- (1) C and D
- (2) A and D
- (3) A and B
- (4) B and C

133. What was introduced by the Zoroastrian Irani immigrants in Hyderabad during the early 19th century ?

- (1) Khubani ka Meetha
- (2) Chai
- (3) Biryani
- (4) Haleem

Irani Chai

134. During the Qutb Shahi period, both the Hindu and Muslim elite wore dresses consisting of *Kulah* and *Qaba*. What do these two terms mean ?

- (1) Shirt and dhoti
- (2) Head-band and tie
- (3) Cap and long coat
- (4) Trousers and belt



135. Which among the following was considered as the main occupation of Dependent Castes (Aasrita Kulalu) in Telangana?

- (1) Begging
- (2) Podu Cultivation
- (3) Knitting mats and baskets
- (4) Hunting

136. What is meant by 'Panjatan-e-Pak'?

- (1) According to the Shia faith of Islam it means the five pure persons. i.e., Mohammad, Ali, Fathima, Hasan and Hussain. These names were incorporated in Alam.
- (2) Five important festivals celebrated by the Muslims of Deccan.
- (3) Five important duties to be performed by every Muslim.
- (4) Five important duties of Muslims carried in the emblem i.e., 'Alam' created in the Deccan between 15th and 16th centuries.

137. 'Shivayogasaram' gives details about the family history of which Kakatiya subordinates?

- (1) Kota Chiefs
- (2) Malyala Chiefs
- (3) Induluri Chiefs
- (4) Cheraku Chiefs

138. Consider the following statements of Kakatiya period:

- A. The usual way of representing the people in general during the Kakatiya period is by mentioning them as 'Ashtadasapraja'.
- B. People of this period led a corporate life.
- C. During Kakatiya period individual castes organized their corporate associations called 'Samayachara' to look after their well-being.
- D. The Brahmin villages were generally formed into an association called 'Asamkhyatulu'.

Which of the above statements are not correct?

- (1) C and D
- (2) A and D
- (3) A and B
- (4) B and C

139. Match the following:

Painters	Mughal Rulers
A. Mir Sayyid Ali	I. Humayun
B. Daswant	II. Akbar
C. Ustad Mansur	III. Jahangir
D. Mir Hashim	IV. Shahjahan

Choose the correct answer:

- (1) A-I; B-III; C-II; D-IV
- (2) A-III; B-I; C-IV; D-II
- (3) A-I; B-II; C-III; D-IV
- (4) A-II; B-IV; C-I; D-III

140. According to Abul Fazal, Akbar started one thousand karkhanas for producing woollen clothes. At which among the following places did he establish them?

- (1) Lahore
- (2) Amritsar
- (3) Surat
- (4) Dacca

141. Which of the following statements is/are correct?

- A. Arya Samaj was started in 1875 by Swami Dayanand Saraswati.
- B. Vivekananda condemned rituals and superstitions.
- C. The theosophists advocated the revival and strengthening of Hinduism.
- D. In 1920s, Akali Movement was started to purify Sikh Gurudwaras in Punjab.

Choose the correct answer:

- (1) B, C and D
- (2) A, B, C and D
- (3) A, B and C
- (4) A, B and D

142. "Iltutmish got erected two marble statues of lions and bells hanged to their necks. Anybody could ring these bells and seek justice from the Sultan." Who among the following writers recorded this statement?

- (1) Isami
- (2) Malik Qutb-ud-din
- (3) Minhaj-us-Siraj
- (4) Ibn Batuta

143. Either the throne or the coffin (Ya takht, Ya takhta) was a proverb of which country?

- (1) Persia
- (2) Arabia
- (3) Hindustan
- (4) Turkistan



144. Which among the following pairs is **not** correctly matched?

- A. Somnath Temple : Solankis
 B. Kandariya Mahadeva Temple : Chauhans
 C. Aihole Temple : Badami Chalukyas
 D. Konark Temple : Chandelas

(1) B and D only

- (2) A and D only
 (3) A and B only
 (4) B and C only

145. Consider the following statements about Warangal fort and its inner constructions:

- A. Shitabkhan constructed 'Kush Mahal' in the fort of Warangal, which is a replica of 'Hindola Mahal' at Mandu.
 B. Pratapa Charitra, Siddeshwara Charitra and Kridabhiramam contain interesting descriptions on the fort of Warangal.
 C. According to Pratapa Charitra, Warangal fort contains 88 bastions or kottalamulu.
 D. According to Sivayoga Saramu the foundation of Warangal fort was laid by Ganapatideva.

Which of the above statements are correct?

(1) C and D only

(2) A and D only

- (3) A and B only
 (4) B and C only

146. According to Ajivika philosophy, which is the central idea that determines the life of a person?

- (1) Artha
 (2) Niyati
 (3) Karma
 (4) Dharma

147. Identify the **wrong** pair/pairs:

Authors	Texts
A. Bhasa	: Dradira Charudatta
B. Dandin	: Dasakumaracharitra
C. Subandhu	: Vasavadatta
D. Bharavi	: Ravanavadha

(1) A and D only

(2) C and D only

(3) A only

(4) B only

148. South India was the custodian of the pure classical techniques of dance. In Andhra Pradesh and Tamil Nadu, the devadasis kept the dance tradition alive by performing solo and dance-dramas. What are dance-dramas called in South India?

(1) Angika Abhinaya

(2) Aalambana

(3) Chhau nritya

(4) Kuravanjis

149. Consider the following statements regarding Sikhs:

A. A well of eighty-four steps built by Guru Amar Das in Goindwal village has become the first pilgrimage centre for the Sikhs.

B. Harmandir Sahib (Golden Temple) was constructed by Guru Arjan Dev at Amritsar in the year 1589.

C. A high platform in front of Harmandir Sahib known as the Akal Takht was built by Guru Hargobind.

D. Guru Gobind Singh introduced 'Khalsa' and established himself in Anandpur, in the Siwalik range, in 1699.

Which of the above statements are correct?

(1) B, C and D

(2) A, B, C and D

(3) A and B

(4) A, B and C

150. "This diamond of India, this jewel of Maharashtra, this prince of workers Look at him and try to emulate him." Who made this remark about Gopal Krishna Gokhale?

(1) Mahatma Gandhi

(2) G.V. Joshi

(3) B.R. Nanda

(4) Bal Gangadhar Tilak



CSB IAS ACADEMY

SPACE FOR ROUGH WORK

CSB IAS ACADEMY

